



OGIO® Command 1/4-Snap OG151



Take command of your layering options in this 1/4-snap that mixes OGIO edge with a hint of fine merino wool.

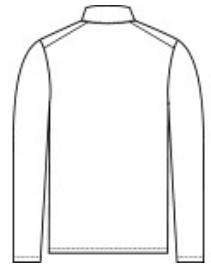
- 4.9-ounce, 85/15 poly/merino wool
- Double-knit with polyester wool jersey face and polyester mesh back
- OGIO heat transfer label for tag-free comfort
- Self-fabric cadet collar
- Matte black metal snaps
- Forward side seams
- Black reflective O heat transfer on front left hem

CARE INSTRUCTIONS

Machine Wash Cold With Like Colors. Do Not Use Fabric Softener. Do Not Bleach. Tumble Dry Low. Remove Promptly. Cool Iron If Necessary.



front



back

HOW TO MEASURE



CHEST WIDTH

Measure under the arm and around the fullest part of the chest with arms down, keeping tape horizontal.

SIZE CHART

| | XS | S | M | L | XL | 2XL | 3XL | 4XL |
|-------|-------|-------|-------|-------|-------|-------|-------|-------|
| Chest | 32-34 | 35-37 | 38-40 | 41-43 | 44-46 | 47-49 | 50-53 | 54-57 |

COLOR INFORMATION



Blacktop
PMS BLACK C



Gear Grey
PMS COOL GRAY
11C



Spar Blue
PMS 2189C